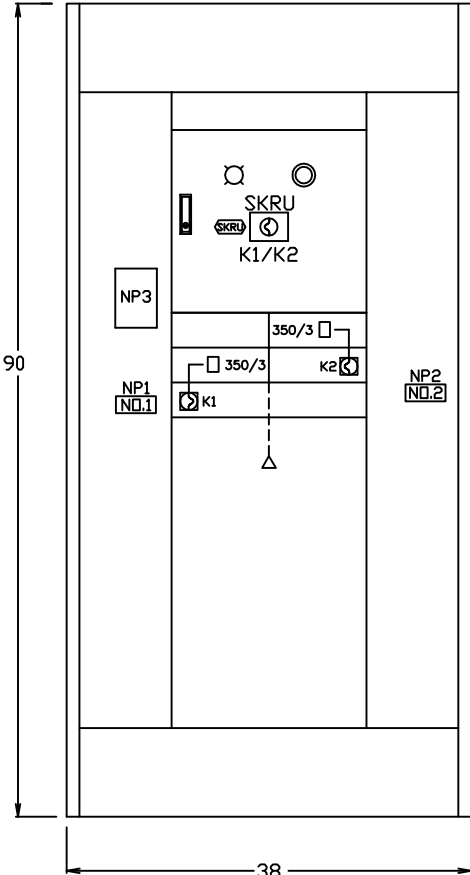
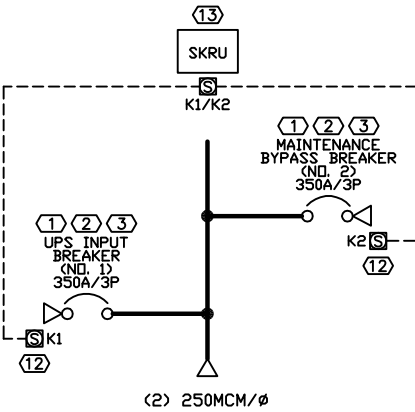


BASE DETAIL



FRONT VIEW

EXTERNAL UPS BYPASS PANEL
480V-3Ø-3W-400A, S.C.C. = 65KAIC
NEMA-1 (WALL MOUNTED)



ONE LINE DIAGRAM

BILLS OF MATERIALS (CONFIG #45313)				
ITEM	QTY	CATALOG#	MANUFACTURER	DESCRIPTION
1	2	SGLA36AT0400	GE	400A SPECTRA CIRCUIT BREAKER
2	2	SRPG400A350	GE	SPECTRA SERIES 350A RATING PLUG. PLUG
3	2	TCLK365	GE	TERMINAL LUGS FOR SG600 LINE.
4	1	CR104PLG32R	GE	120V XFMR-TYPE RED PILOT LT
5	1	CR104PBG10B1	GE	BLACK P/B W/1-NO CONTACT
6	1	KU12	CONNECTRON	TERMINAL BLOCK 12-POINTS.
7	1	SP1605	CONNECTRON	MARKING STRIP 12-POINT NUMBER
8	1	7940029425	WEIDMULLER	2 POLE, FUSEHOLDER, 30A, 600V CLASS CC, WITH LED INDICATION
9	2	ATMR3	SHAWMUT	CLASS CC FUSES 3A-600V
10	1	B300BTZ13JK	MICRON	300VA 240V/480V:120V CPT
11	1	1966070000	WEIDMULLER	1 POLE, FUSEHOLDER, 30A, 600V CLASS CC, WITH LED INDICATION
12	2	KFL030010S	KIRK	KIRK KEY TYPE F WITH 3 INCH PROJECTION KEY REMOVABLE IN EXTENDED POSITION
13	1	SKRU11E0000S00	KIRK	UNHOUSED SOLENOID KIRKKEY 1 CYLINDER ENERGIZED/DE-ENERGIZED WITH STAMP KEY
14	1	ATMR6	SHAWMUT	CLASS CC FUSE TYPE 6A-600V.
15	1	10300226	ENTRELEC	FUSE HOLDER END STOP.

TRANSFER SEQUENCE-INSTRUCTIONS

OBJECTIVE: TO PERMIT A MAKE-BEFORE-BREAK TRANSFER OF THE CRITICAL LOAD FROM THE UPS'S INTERNAL MAINTENANCE BYPASS SOURCE TO THE EXTERNAL BYPASS SOURCE WITHOUT INTERRUPTION.

WARNING

PERSONS NOT FAMILIAR WITH THE OPERATION OF THIS SYSTEM SHALL NOT ATTEMPT TO CHANGE THE POSITION OF ANY OF THESE DEVICES. FAILURE TO HEED THESE INSTRUCTIONS WILL RESULT IN LOSS OF POWER AND POSSIBLE DAMAGE TO CRITICAL EQUIPMENT.

TRANSFER TO MAINTENANCE BYPASS:

- PLACE THE UPS MODULE INTO INTERNAL BYPASS. SEE UPS MANUAL FOR INSTRUCTIONS.
- WHEN THE INDICATOR LIGHT IS ILLUMINATED, DEPRESS THE ADJACENT PUSH BUTTON, HOLD, AND REMOVE THE KEY BY TURNING IT.
- INSERT THE KEY INTO THE LOCK ON NO. 2 LOCK AND TURN TO PERMIT CLOSING OF NO. 2 BREAKER.
- CLOSE NO. 2 BREAKER.
- OPEN NO. 1 BREAKER.
- TURN KEY AND LOCK OPEN THE NO. 1 BREAKER.
- REMOVE KEY. FROM THE NO. 1 LOCK AND INSERT INTO THE SOLENOID AND TURN
- THE UPS IS NOW ISOLATED FROM THE CRITICAL LOAD

TRANSFER FROM MAINTENANCE BYPASS:

- THE UPS MODULE MUST BE IN INTERNAL BYPASS MODE OF OPERATION PRIOR TO THE START OF ANY TRANSFERS.
- WHEN THE INDICATOR LIGHT IS ILLUMINATED DEPRESS THE ADJACENT PUSHBUTTON, HOLD, AND REMOVE THE KEY BY TURNING IT.
- INSERT KEY IN THE NO. 1 LOCK AND TURN IT.
- CLOSE NO. 1 BREAKER.
- VERIFY BREAKER NO. 1 IS CLOSED. FAILURE TO CLOSE BREAKER NO. 1 WILL INTERRUPT POWER TO THE LOAD.
- OPEN BREAKER NO. 2.
- REMOVE THE KEY FROM THE LOCK ON BREAKER NO. 2 AND INSERT KEY IN THE SOLENOID UNIT AND TURN.
- THE UPS SYSTEM IS NOW AVAILABLE TO BE RESTORED AND PLACED IN SERVICE. SEE UPS MANUAL FOR INSTRUCTIONS.

NAMEPLATE "NP3"

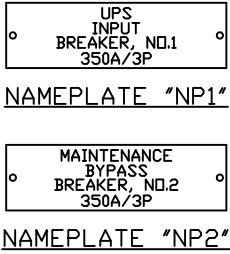
NAMEPLATE NOTES:

- ENGRAVED PHENOLIC PLATE RED SURFACE AND WHITE CORE.
- ENGRAVED PHENOLIC PLATE BLACK SURFACE AND WHITE CORE.
- WORD "WARNING" SHALL BE 1/2" HIGH LETTERS, ALL OTHER LETTERS SHALL BE 1/4" HIGH LETTERS.
- LABELS FOR LINE 1, 2, 3 SHALL BE .475" HIGH LETTERS AND LINE 4 SHALL BE 1/4" HIGH LETTERS.
- LABELS TO BE AFFIXED WITH SCREWS.
- NAMEPLATE SIZE BE 5' X 3'

NOTES:

- CONSTRUCTION SHALL BE OF CODE GAUGE SHEET STEEL NEMA-1 INDOOR ENCLOSURE.
A) SWBD SHALL MEET REQUIREMENTS PER NEMA, ANSI, IEEE, & U/L STANDARDS.
B) SWBD. SHALL BE FRONT ACCESSIBLE ONLY. WALL MOUNTED.
C) PROVIDE U/L LABELS.
- NAMEPLATE SHALL BE BLACK PHENOLIC PLASTIC WITH WHITE CORE, SCREW ON TYPE.
- BUSSING: 400A COPPER BUS
A) MAXIMUM AVAILABLE S.C.C. (SYM. RMS.): 65KAIC
- FINISH: ANSI 61 LIGHT GREY.

REFER BELOW
TO NAMEPLATE
NOTES #2,4,5,6



EXTERNAL UPS BYPASS PANEL
FOR
SVTIX

SHIP TO ADDRESS:
SVTIX
250 STOCKTON AVE.

SOLD TO ADDRESS:
COMPUTER AIR/POWER SYSTEMS
2372 WALSH AVENUE



48205 WARM SPRINGS BLVD.
FREMONT CA, 94539
(510) 656-1600

DRAWN BY: RA

DATE: 07/03/08

ENGINEER: RN

SCALE: NONE

P.O. # 08-1122-K1

L.I. # 001

JOB NO.

56-76187

DRAWING

1_FV_01

SHEET 1 OF

